

UNIT 39 LEASING BROCHURE

Unit 39 occupies a dominant position on the First Floor of Princes Square.

The unit is adjacent to Space NK and The Pen Shop, with other nearby retailers including COS, French Connection, Vivienne Westwood and Dower & Hall.

RECENT LETTINGS:

The Club House | All Saints | & Other Stories | Bloom

SHOP | DINE | MEET





DETAILS

	SQ.FT	SQ.M
Internal	855	79.4
Total	855	79.4

Rent

- £30,000

Rates Payable

- £9,860

Service Charge

- £16,373

Insurance

- £1,197

Marketing

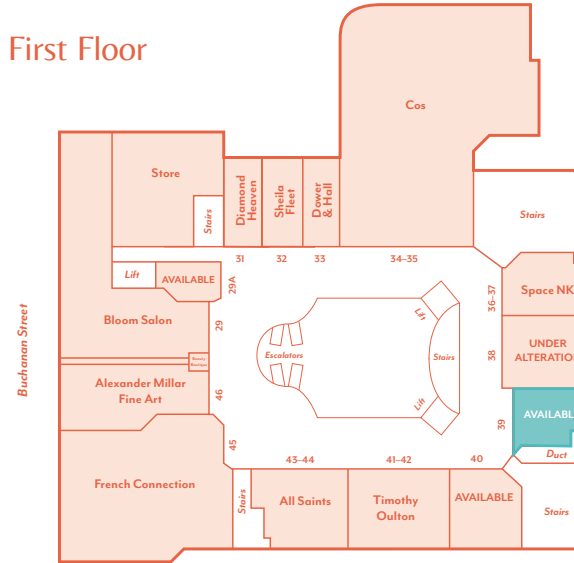
- £839

EPC

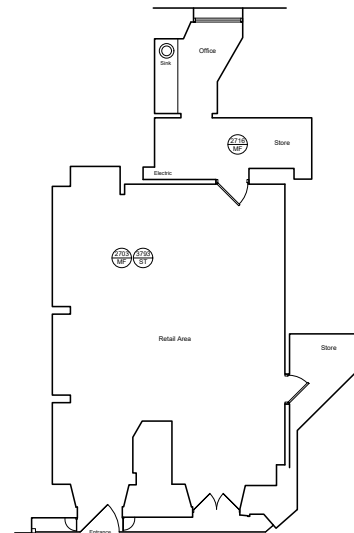
- Available upon request.

FLOORPLAN

First Floor



UNIT PLAN





CONTACT

Rakesh Joshi

T +44 (0)7741 385 322

E rjoshi@lcpproperties.co.uk

Alex Williams

M +44 (0)7741 951843

E awilliams@lcpproperties.co.uk

Stuart Moncur

M +44 (0)7887 795 506

E stuart.moncur@savills.com

Charlie Hall

M +44 (0)7807 999 693

E charlie.hall@savills.com

James Godfrey

M +44 (0)7768 190114

E james@culverwell.co.uk

LCP
part of M Core

**01384
400123**

searchlcp.co.uk



Culverwell

0131 226 6611
www.culverwell.co.uk

@princessquare

@princessquare



Savills and Culverwell for themselves and for the vendors or lessors of this property for whom they act, give notice that: (i) these particulars are a general outline only, for the guidance of prospective purchasers or tenants, and do not constitute the whole or any part of any offer or contract; (ii) Savills and Culverwell cannot guarantee the accuracy of any description, dimensions, references to condition, necessary permissions for use and occupation and other details contained herein and prospective purchasers or tenants must not rely on them as statements of fact or representations and must satisfy themselves as to their accuracy; (iii) no employee of Savills and Culverwell has any authority to make or give any representation or warranty or enter into any contract whatever in relation to this property; (iv) rents quoted in these particulars may be subject to VAT in addition; and (v) Savills and Culverwell will not be liable, in negligence or otherwise, for any loss arising from the use of these particulars. Consumer Protection from Unfair Trading Regulations 2008 and Business Protection from Misleading Marketing Regulations 2008: Every reasonable effort has been made by Savills and Culverwell to ensure accuracy and to check the facts contained in these particulars are complete. Interested parties are strongly advised to take appropriate steps to verify by independent inspection or enquiry all information for themselves and to take appropriate professional advice. Designed & produced by Maguire.